



DEPARTMENT OF EDUCATION

LIS and EBEIS Features and Implementation Guidelines

Marieta C. Atienza

Project Development Officer V

Chief, Education Management Information

System Division, Planning Service

Department of Education

May 16, 2017



LEARNER INFORMATION SYSTEM



Learner Information System (LIS)



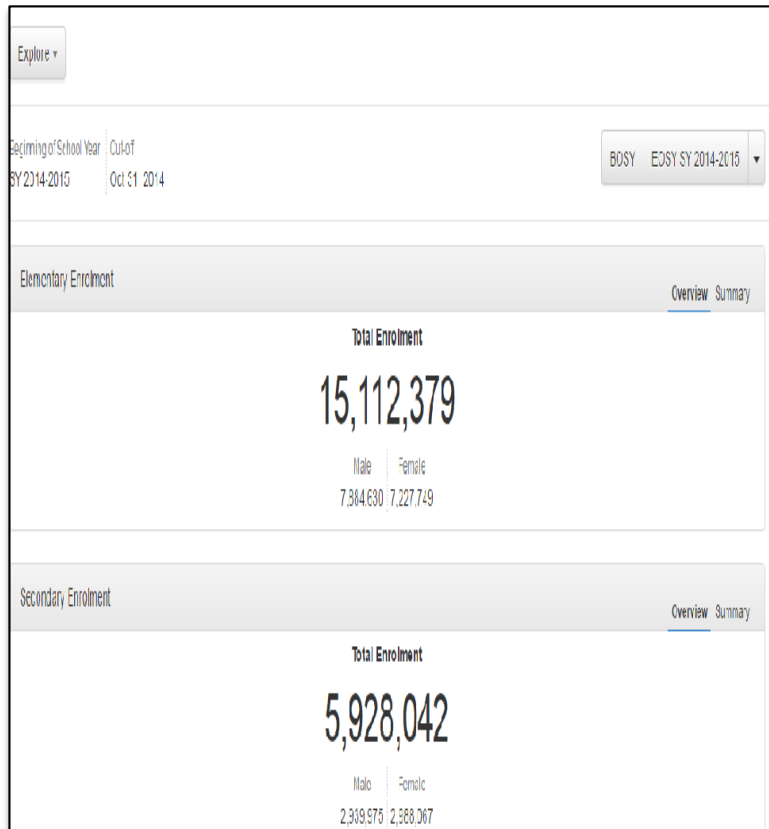
A web-based system, linked with EBEIS, maintaining the registry of learners and enables the establishment of a centralized “Learner Registry”.



The LRN, which is intended to reference a “Registry of Learners”, is a unique and permanent 12-digit number assigned to a person who enters the Philippine Basic Education Program.



Basic learner information is captured, stored and accessed through a secured facility to enhance tracking and decision-making on learners at various levels of DepEd management.





LIS IMPLEMENTATION HIGHLIGHTS

Implementation Highlights

Year	DepEd Order	Details
2011	<i>DO 67 s. 2011</i>	Buildup of Learner DB. All public schools & CLCs called upon to submit master list of learners for SY 2011.
2012	<i>DO 22 s. 2012</i>	LRNs created for every public-school learner. Online database of learner from public school launched
2013	<i>DO 33 s. 2013</i>	Online updating of learner via LIS
2014	<i>DO 13 & 42 s. 2014</i>	Full implementation of LIS
2015	<i>DO 26 s. 2015</i>	ALS, Private schools, SUCs & LUCs
	<i>DO 48 s. 2015</i>	Early registration for SHS
2016	<i>DO 25 s. 2016</i>	SHS enrollment in all public schools
	<i>DO 34 s. 2016</i>	SHS enrollment in all private schools, HEIs, SUCs & LUCs

Learner Reference Number (LRN)

- A **unique** and **permanent** 12-digit number assigned to anyone enrolled into the Philippine basic education system
- To be used by all schools in the Philippines
- Offers access to learner profiles in the registry and even performance data as the learner completes the program, whether it be in the formal or non-formal mode of learning
- This applies regardless of the learner's transfer to another school or learning center in the public or private sector, and promotion/moving up to the secondary level
- The LRN shall be incorporated in all documents, forms, examinations, surveys, and databases when referring to specific learner (*DO 22 s. 2012*)

LRN Format

XXXXXXXX

YY

ZZZZ

School ID

Starts with:

1, 2, 3, 5 – Public schools
4 – Private schools
6 – SUC & LUC

School Year

Last two digits of the year when the student was enrolled in the LIS

Student Number

A four-digit unique and sequential number assigned to each learner

For example:

198765150721

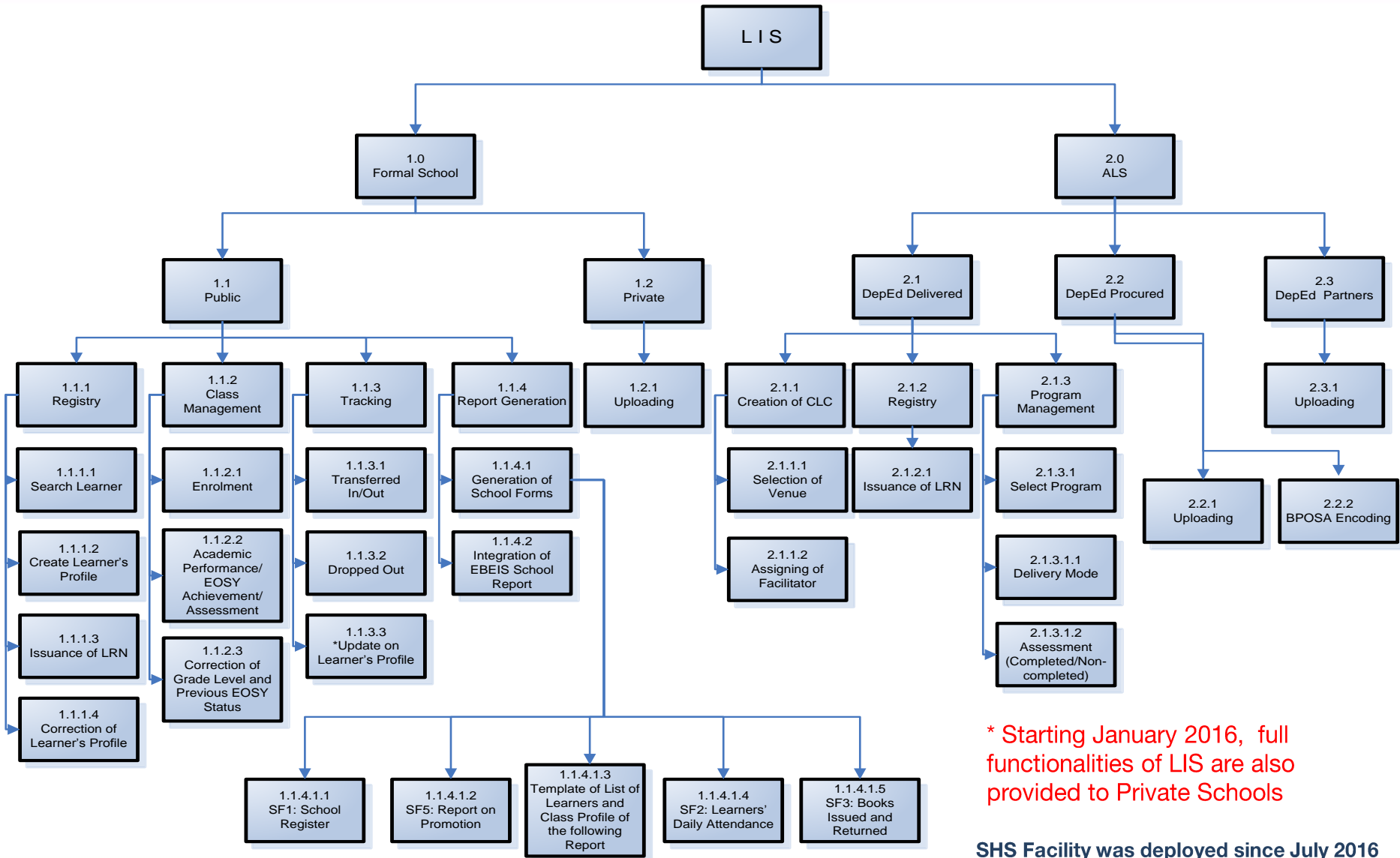
Policies on LRN

- Only the following institutions are authorized to issue LRN to learners (*DO 52 s. 2016*):
 - Public schools (includes DepEd-managed schools, SUC, and LUC);
 - Private schools licensed by DepEd (with permit and/or recognition); and
 - ALS Community Learning Centers (DepEd-managed, -procured, and -partnered).



LIS FUNCTIONAL DESIGN

LIS Functional Design



* Starting January 2016, full functionalities of LIS are also provided to Private Schools

SHS Facility was deployed since July 2016

Registry

Search

- Exact Parameters
- Global

Creation

- Unique (no special characters)
- Required Basic Information
- Other Tags
- Issuance of LRN

Correction

- Valid Reference
- Protocol
- Merge to Existing Record

Class Management

Enrollment

- Create Class/Section
- Eligibility
- Date of First Attendance

Academic Performance

- Acceleration
- End of SY Status, Tagging of Honors, and General Average
- Pre-requisite for enrollment in succeeding SY

Correction

- Valid Reference
- Protocol
- Merge to Existing Record

Tracking

Transfer

- Public to Public
- Public to Private
- Private to Public
- Private to Private
- Date Effective

Dropout (NLS)

- Reason
- Effective Date

Balik- Aral

- Revised definition
- Automatic Tagging
- Identify where the last school attended
- Recent SY attended

Transfer of Documents

Transfer In

- You enrolled learner that formerly attended classes in any date from other school
- Wait for confirmation from originating school
- Public to Public
- Public to Private
- Private to Public
- Private to Private
- Date Received of Document

Transfer Out

- Your former learner was enrolled to another school in the current SY
- Accept or Decline
- Effective Date of Transferring Out
- Date of Transmitted of document
- Remark Message

Division Support

- Alternative to school to school transaction (Learner who is no longer attending basic education or about to transfer to school abroad)
- Coordinate to school concern
- Provision of SF 5 as substitute in the absence of form 137

Report Generation

School Forms

- SF1 – Master List of Learners
- SF2 – Daily Attendance Template with pre-loaded list of learner per section
- SF3 – Books Issues and Returned Template with pre-loaded list of learner per section
- SF4 – Monthly Report of Movements
- SF5 – Report on Promotion
- SF6 – Summary of Report on Promotion

Enrollment- Related Data Pushed to EBEIS

- Age Profile
- No. of Learner by Grade/Level/Gender
- Movements

Other Customized Reports

- Alternative to school to school transaction (Learner who is no longer attending basic education or about to transfer to school abroad)
- Coordinate to school concern
- Provision of SF5 as substitute in the absence of form 137



USER ACCOUNT MANAGEMENT

Types of User

- Super User Account (Central System Administration)
- Regional Head, Regional System Administrator, and Regional Personnel
- Division Head, Division System Administration, ALS Administrator, ALS Facilitator, and Division Personnel
- School Head, School System Administrator, and Class Adviser
 - Class Adviser Account is not yet available for Private School and SHS

LIS Dashboard

1 Dashboard
307815 - Bacoor NHS - Villa Maria Annex

Dashboard

List of Classes

Transfers **393**

School Forms

Data Corrections

Support

6

7

8

Explore ▾

3

Today
Apr 3, SY 2016-2017

2

BOSY EOSY SY 2016-2017 ▾

Enrolment **4**

Overview Summary

Total Enrolment **5**

1,492

Male	Female
757	735

* Features:

- 1. School ID and School Name**
- 2. Date**
- 3. School Year**
- 4. Data Element**
- 5. Data figures**
- 6. Account Name**
- 7. Bulletin, Manuals, Tutorials, Announcements**
- 8. Sign Out account**

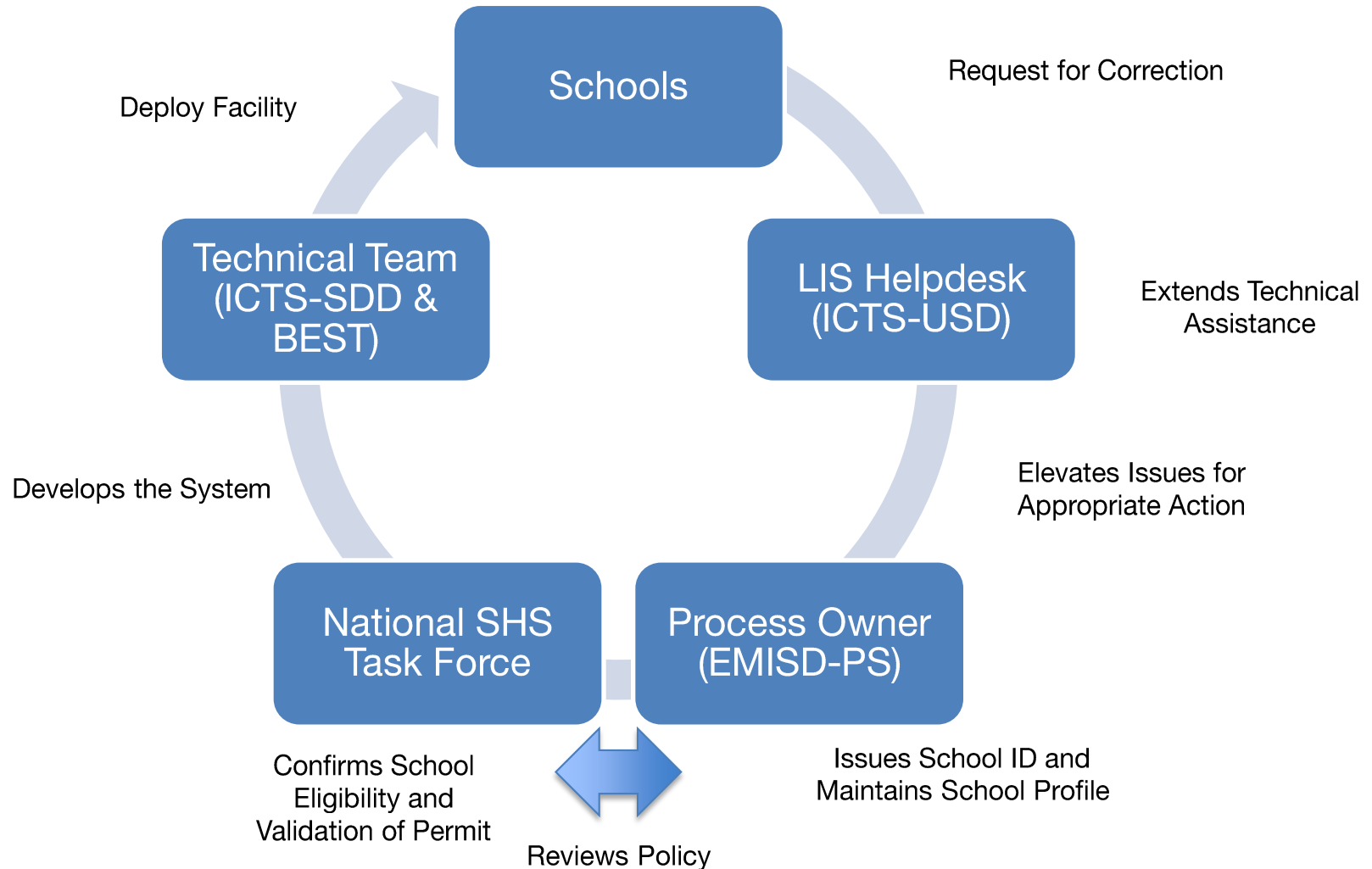


SENIOR HIGH SCHOOL MODULE

Milestones

- **October 2015** – Facility for Early Registration (*DO 41 s. 2015*)
- **June 2016** – Deployment of SHS Enrolment Module (*DO 25 & 34 s. 2016*)
- **July 2016** – Initial Database Integration with PEAC database
- **August 2016** – Deployment of Tracking Module

Implementation





ENROLLMENT

Senior high school enrolment

Search learner record by LRN

LEARNER REFERENCE NO

104795050008

Search

[or by name](#) ▾

First name

Middle name

No middle

Last name

Ext name

Birth date

Month ▾ Day ▾ Year ▾

Gender

-- select -- ▾

Search by name

5A

With LRN



jonas.diche

Account | Logout



Tibagan National High School

300781 / Region III / Bulacan

Senior high school

Overview

Enrolment

Support

3



SY 2016 - 2017

Senior high school

SY 2016 - 2017 enrolment by program offering

1st Semester

Track	Strand	Enrolment count	Enrolment (multiple registration)
Academic Track	General Academic Strand	0	0

Senior high school enrolment

4



SY 2016 - 2017 enrollment is empty

Enroll Learner

Senior high school enrolment

Select the record to enrol. For deactivated LRN, send request to reactivate to icts.usd@deped.gov.ph together with completed request form 2 (RF02) in excel format.

Search learner record by LRN

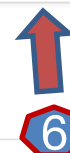
LEARNER REFERENCE NO

104795050008

Search

or by name ▾

#	LRN	First name	Middle name	Last name	Ext name	Gender	Birthdate	
1	104795050008	VINCE	CORTES	AUSTRIA		MALE	02/27/2000	Enrol



Senior high school enrolment

Basic Profile

LRN 104795050008
First name VINCE
Middle name CORTES
Last name AUSTRIA
Ext name
Birthdate 02/27/2000
Gender Male

Latest enrolment history

Grade Grade 10 (Year IV)
Status No status
School year 2015 - 2016
School 300781 - Tibagan National High School

Learner is ineligible for enrolment due to last school year EOSY status. If you wish to proceed, enrolment will require correction of learner's status.

G10 EOSY Status

-- select status -- ▾

-- select status --

Promoted

Conditionally promoted

Senior high school enrolment ▾

-- select -- ▾



Enrol

Leamer enrolled.

Senior high school enrolment

SY 2016 - 2017 enrolment masterlist

1st Semester

Enrol Leamer

LRN	Name	Program	
104795050008	AUSTRIA, VINCE	Academic Track - General Academic Strand	Profile

Senior high school enrolment

No record found for this learner

Review provided details and click enrol button to continue or type again in the search by name panel for correction.

First name RODRIGO
Middle name MANE
Last name MENDOZA
Ext name
Birthdate 08/12/2000
Gender Male

Create record and enrol

Search learner record by LRN

LEARNER REFERENCE NO

7B  or by name ▾

First name

Middle name

No middle

Last name

Ext name

Birth date

Aug ▾ 12 ▾ 2000 ▾

Gender

Male ▾

Senior high school enrolment

New LRN

This enrolment will create a new learner record. Provide a reason to facilitate approval by the Division office for late LRN issuance

Reason

--select reason--
--select reason--
From same school not encoded
From other school not encoded
From School Abroad
PEPT Passer
A&E Passer
PVT Passer

Middle name MANE
Last name MENDOZA
Ext name
Birthdate 08/12/2000
Gender Male

Senior high school program

-- select --

Enrol

Learner enrolled.

Senior high school enrolment

SY 2016 - 2017 enrolment masterlist

1st Semester

Enrol Learner

LRN	Name	Program	
104795050008	AUSTRIA, VINCE	Academic Track - General Academic Strand	Profile
FOR APPROVAL	MENDOZA, RODRIGO	Academic Track - General Academic Strand	Profile



TRANSFER

Transfers

Transfer requests
104795 - Tibagan Elementary School

Dashboard List of Classes **Transfers** School Forms Data Corrections Support

Transfer requests

Transfer-out **Transfer-in 2**

Pending acknowledgement
Pending acknowledgement
 Waiting confirmation (1)
 Completed (1)
 Not confirmed (1)

No record found.

Transfer-out **Transfer-in 2**

Waiting confirmation (1)

All schools

#	Learner	Enrolment	Transfer details	
1	407359150272 CASTILLO, CRISTINO RODRIGO	Male Grade 5 on 06/13/2016	407359 PAREF-Southridge School, Inc. Private / Elementary, Junior High School and Senior High School / Non-Sectarian NCR / NCR FOURTH DISTRICT / CITY OF MUNTINLUPA	View

Transfer-out **Transfer-in 2**

Learner

LRN 407359150272
Name CASTILLO, CRISTINO RODRIGO
Birthdate 02/28/2005
Gender Male

Transfer details

Grade
Grade 5
Date of first attendance
06/13/2016
Origin
407359 PAREF-Southridge School, Inc.
Private / Elementary, Junior High School and Senior High School / Non-Sectarian
NCR / NCR FOURTH DISTRICT / CITY OF MUNTINLUPA

Transfers

Transfer-out

Transfer-in **2**

Learner

LRN	407359150272
Name	CASTILLO, CRISTINO RODRIGO
Birthdate	02/28/2005
Gender	Male

Transfer details

Grade

Grade 5

Date of first attendance

06/13/2016

Origin

407359 PAREF-Southridge School, Inc.

Private / Elementary, Junior High School and Senior High School / Non-Sectarian
NCR / NCR FOURTH DISTRICT / CITY OF MUNTINLUPA

Confirmed

Document transmitted date

07/26/2016

Remarks

ok

Date

07/27/2016

Acknowledge receipt of transfer document

Transfer-in acknowledged.

Transfers

Transfer-out **1**

Transfer-in

Pending (1)

All schools

#	Learner	Transfer details	
1	407359150330 CHAVEZ, MARTIN JOHN	Male Grade 6 on 06/14/2016 104795 Tibagan Elementary School Public / Elementary / DepED Managed Region III / BULACAN / BUSTOS	Confirm Decline

Learner

LRN 407359150330
Name CHAVEZ, MARTIN JOHN
Birthdate 01/23/2005
Gender Male

Transfer details

Grade
Grade 6
Date of first attendance
06/14/2016
School
104795 Tibagan Elementary School
Public / Elementary / DepED Managed
Region III / BULACAN / BUSTOS

Remarks

Decline

Transfer-out declined.

Transfer-out

Transfer-in **2**

Learner

LRN 407359150330
Name CHAVEZ, MARTIN JOHN
Birthdate 01/23/2005
Gender Male

Transfer details

Grade
Grade 6
Date of first attendance
06/14/2016
Origin
407359 PAREF-Southridge School, Inc.
Private / Elementary, Junior High School and Senior High School / Non-Sectarian
NCR / NCR FOURTH DISTRICT / CITY OF MUNTINLUPA

Not confirmed

Remarks
wrong learner
Date
07/27/2016

Future Enhancements

- Enhancement of User Management Module for Assigning School Head
 - This function will be elevated to Division Office and will synchronize in the updating of EBEIS School Profile
- Incorporation of Learner's Grading System
- Encoding Facility of Monthly Summary Attendance for Learner
- Storage and generation of permanent record or Form 137 of learners
- Updating of SHS Enrollment Data
- Tracking of Transfer of Form 137 and other related documents
- For ALS LIS
 - Learner's Profile editing
 - Tracking within Basic Education System
 - Updating of Facilitators
 - Generation of Reports

BEIS

Basic Education
Information System



Photo credits to: Mr/s. Gil Camporazo

DEPARTMENT OF EDUCATION

Enhanced Basic Education Information System (EBEIS)

Member Login

Username

Password

Sign In

NOTIFICATION:
Please be informed that BEIS server is scheduled for BACKUP and will not be available from 12:00MN - 6:20AM Friday, May 2, 2014. Thank you for bearing with us.

For better education

The Basic Education Information System (BEIS) maintains a database of education statistics, sector performance indicators and profile of public and private schools, learning centers and other education service providers. It is a web-based system designed to enhance information management at all levels of the education system (school, division, region and national levels) through streamlined processes and use of information and communication technologies. It aims to deliver relevant and accurate information to school heads, education managers, policy makers and various stakeholders of the education system. The BEIS aims to achieve the following objectives:

- Improve the collection of data from the schools and field offices and efficiently render delivery of data/information to various stakeholders.
- Support information requirements for planning, quality assurance, monitoring & evaluation and other decision-making activities at all levels of the education system.
- Provide a venue for sharing, using and reusing knowledge within DepED through improving access to data/information.

More about BEIS



A web-based system designed to enhance information management at all levels of the education system (school, division, region and national levels).



Support information requirements for planning, quality assurance, monitoring & evaluation and other decision-making activities



Provide a venue for sharing, using and reusing knowledge within DepEd through increasing access to information

Basic Education Information System OPS OPS Help Sign out

NOTIFICATION:

Central Office / National Profile

National SY 2015 - 2016 Public and Private Public Private SY 2015 - 2016

Address DepED Complex, Meralco Avenue, Pasig City

Contact Info (02) 632-1361

Head of Office Bro. Armin A. Luistro, FSC, Secretary

Regions (17)

Region I - Ilocos Region	Region V - Bicol Region	Region X - Northern Min...	CAR
Region II - Cagayan Vall...	Region VI - Western Vis...	Region XI - Davao Region	NCR
Region III - Central Luz...	Region VII - Central Visa...	Region XII - SOCCSKSA...	
Region IV-A (CALABARZ...	Region VIII - Eastern Vi...	Region XIII (Caraga)	
Region IV - MIMAROPA	Region IX - Zamboanga...	ARMM	

Schools Enrollment Performance Indicator



EBEIS IMPLEMENTATION HIGHLIGHTS

Implementation Highlights

- 2011:
 - Organization of an EBEIS Implementation Management Team (IMT) *(DO 39 s. 2011)*
 - Annual collection and processing of basic education statistical data for SY 2011-2012 *(DO 47, s. 2011)*
 - Implementing guidelines in the operation of EBEIS *(DO 68, s. 2011)*
- 2012: Prioritizing the data collection and validation needed under the EBEIS *(DO 61, s. 2012)*
- 2013-2015: Revision of the EBEIS Data Gathering Forms and Data Dictionary *(DO 24, s. 2013, DO 3, s. 2014, DO 26, s. 2015)*

Implementation Highlights

- 2016:
 - Data Collection of Basic Education Statistics in the LIS and EBEIS for BOSY 2016-2017
(DO 52, s. 2016)
 - Guidelines on the Encoding of Senior High School Enrolment for Second Semester in the LIS for SY 2016-2017
Revision of the EBEIS Data Gathering Forms and Data Dictionary
(DO 70, s. 2016)



EBEIS FEATURES

School ID

- A **unique** six (6) digit number assigned to a DepEd-recognized school (Public or Private) that has DepEd-issued recognition or permit
- To be used by all schools in the Philippines
- Offers access to schools so that their learners can be given a Learner Reference Number (LRN) to become officially enrolled and registered in the LIS/ EBEIS

Standardized School ID

School Type	First Digit Assignment
Public-DepEd Elementary School	1, 2
Public-DepEd Secondary School including SHS	3
Private School	4
Public-Integrated School	5
School under SUCs/ LUCs	6
BRAC School	0

EBEIS Dashboard

BEIS Basic Education Information System

NOTIFICATION: Attention DO: EBEIS is open for updating of Private Schools Age Profile at the Division Office



Home

1

- ▶ Home
- ▶ Edit School Profile
- ▶ BEIS Data Entry
- ▶ School Building Inventory
- ▶ Status of Request to revert BEIS Report status
- ▶ Download School Forms
- ▶ + Instructional Video for the Revised School Forms

△ / Central Office / Region V - Bicol Region / Albay / San Andres Elementary School Profile

2

4

112058 San Andres Elementary School SY 2015 - 2016

3

« SY 2015 - 2016 »

Address -San Andres

Contact 09097532165 / 09194409056

Info

Head of Office ALMA B. BALEDA, OFFICER IN CHARGE/HEAD TEACHER

Elementary, Regular School, Monograde, School with no Annexes

5

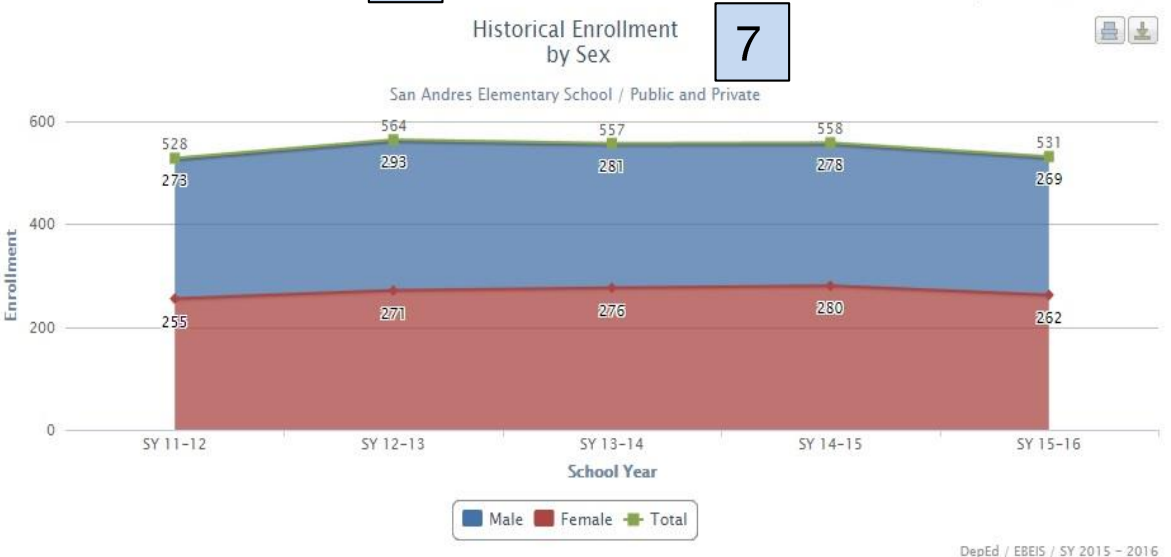
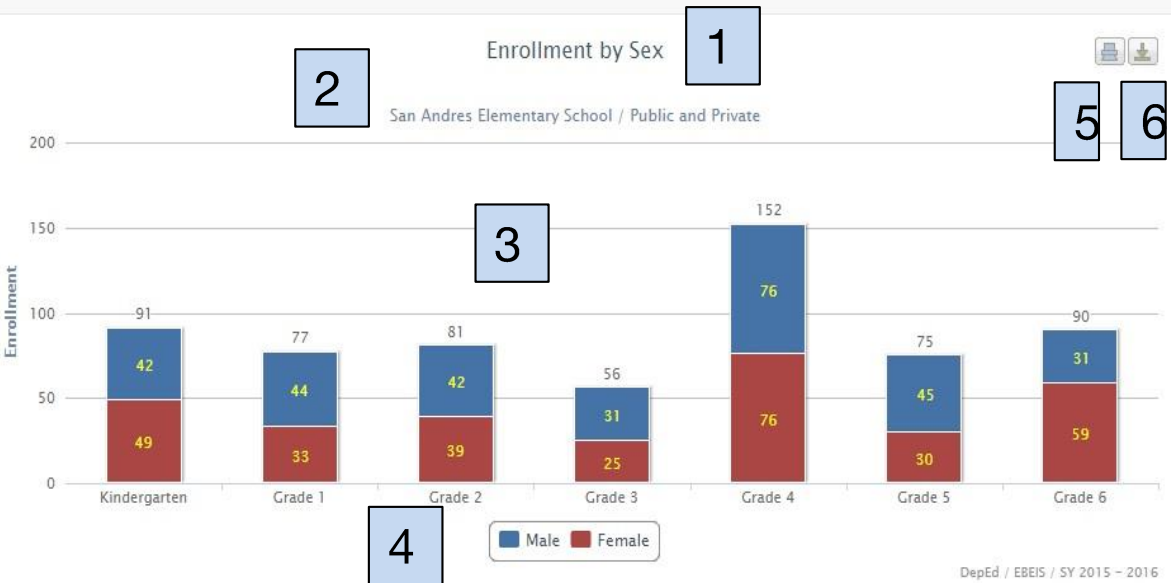
School Report Card ▾

6

* Features:

1. Functional Buttons
2. Region, Division and School Name
3. School ID, Name and Year
4. School Year
5. School Address, Contact Info, Head and Curricular Offering
6. School Report Card (SRC)
7. Account Name
8. Bulletin, Manuals, Tutorials, Announcements
9. Sign Out account

EBEIS Dashboard



BASIC EDUCATION DATA

* Features:

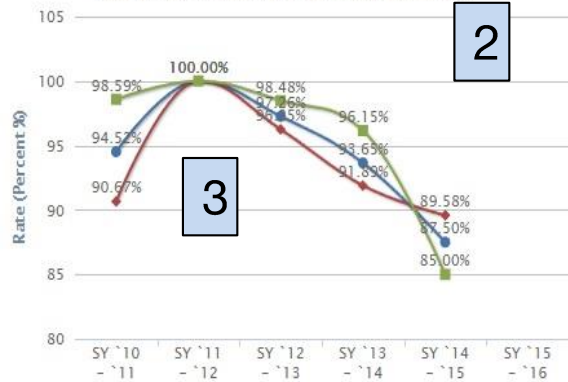
1. Enrolment by Sex data
2. School Name
3. Data Graph
4. Legend of the data graph
5. Print facility
6. Download facility
7. Historical Enrolment by Sex data

EBEIS Dashboard

1 Elementary School Grade 1 with ECD by Sex

5 6

San Andres Elementary School / Public and Private



Elementary School Promotion Rate by Sex

San Andres Elementary School / Public and Private



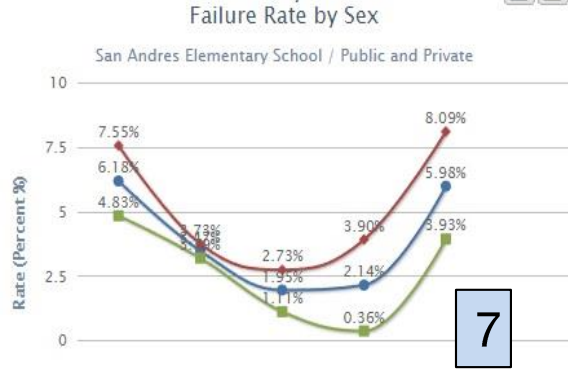
PERFORMANCE INDICATORS (PI)

* Features:

1. PI by Sex
2. School Name
3. Data Graph
4. Legend of the data graph
5. Print facility
6. Download facility
7. Other PI data of the school

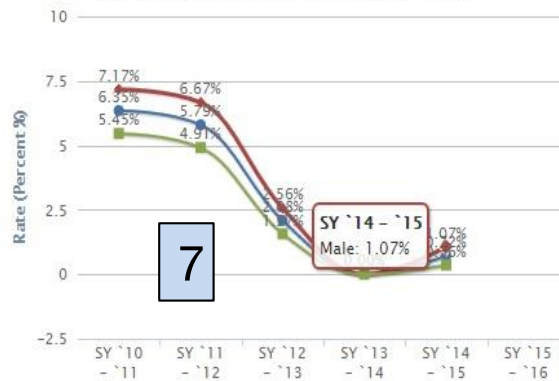
4 Elementary School Failure Rate by Sex

San Andres Elementary School / Public and Private



Elementary School Repetition Rate by Sex

San Andres Elementary School / Public and Private



EBEIS Functional Buttons

Basic Education Information System

BEIS Basic Education Information System

Home

- ▶ Home
- ▶ Edit School Profile
- ▶ BEIS Data Entry
- ▶ School Building Inventory
- ▶ Status of Request to revert BEIS Report status
- ▶ Download School Forms
- ▶ + Instructional Video for the Revised School Forms

- **Home-** sends back the user to the Dashboard/ Home Page
- **Edit School Profile-** contains the school's relevant information for update as necessary
- **BEIS Data Entry-** contains the data elements about the school's basic education profile and data needed to be updated during the Beginning of SY (BOSY) and after the End of SY (EOSY)
- **School Building Inventory-** contains the data elements about the school's site, buildings, classrooms and other relevant facilities needed to be updated
- **Status of Request to revert BEIS Report status-** provides the status of the school's request to revert BEIS status
- **Download School Forms-** contains the different School Forms 1- 7 (in MS Excel format) that the schools use to input and/ or update learners and teachers data
- **Instructional Video-** contains tutorials on how to correctly input and/ or update data in the School Forms

Future Enhancements

- Finalization of the system facilities for the SHS data elements
- Standardization of the Curriculum listing based on the implementation of the K- 12 Curriculum Program
- Updating of the EBEIS Forms, Data Dictionary and EBEIS facilities for the upcoming Beginning of School Year (BOSY) 2017- 2018



-END OF PRESENTATION-

THANK YOU!